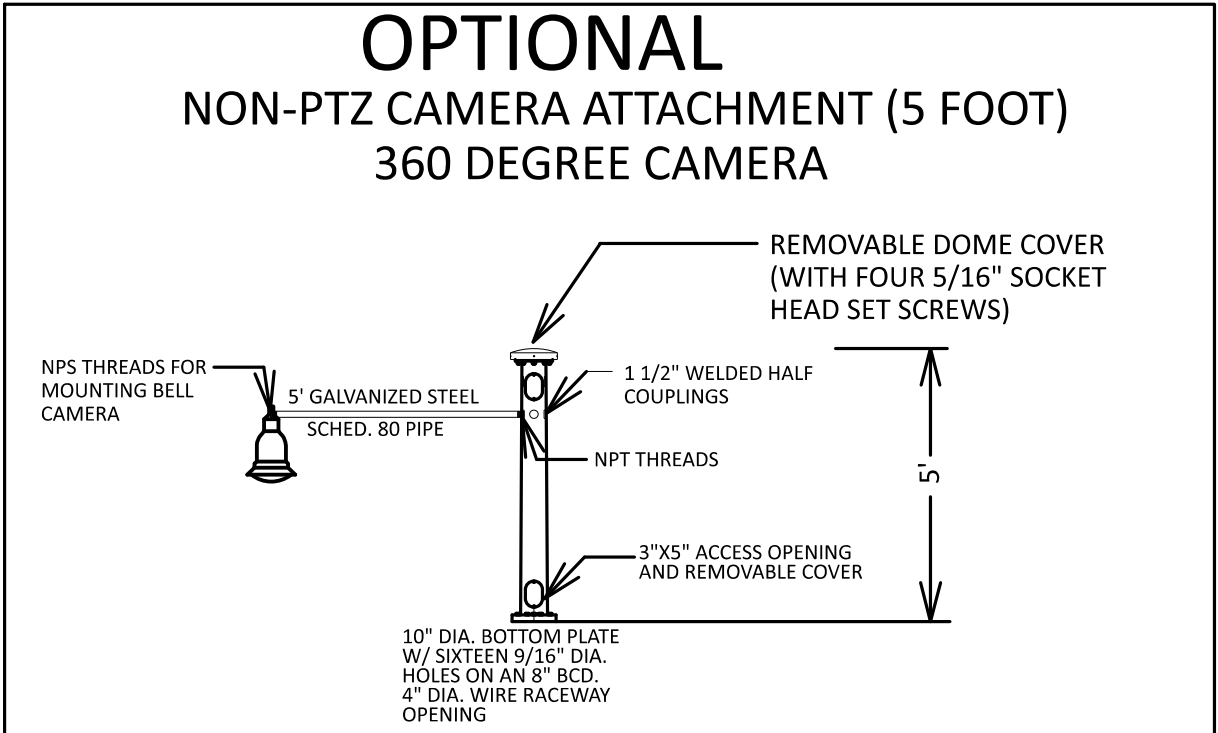
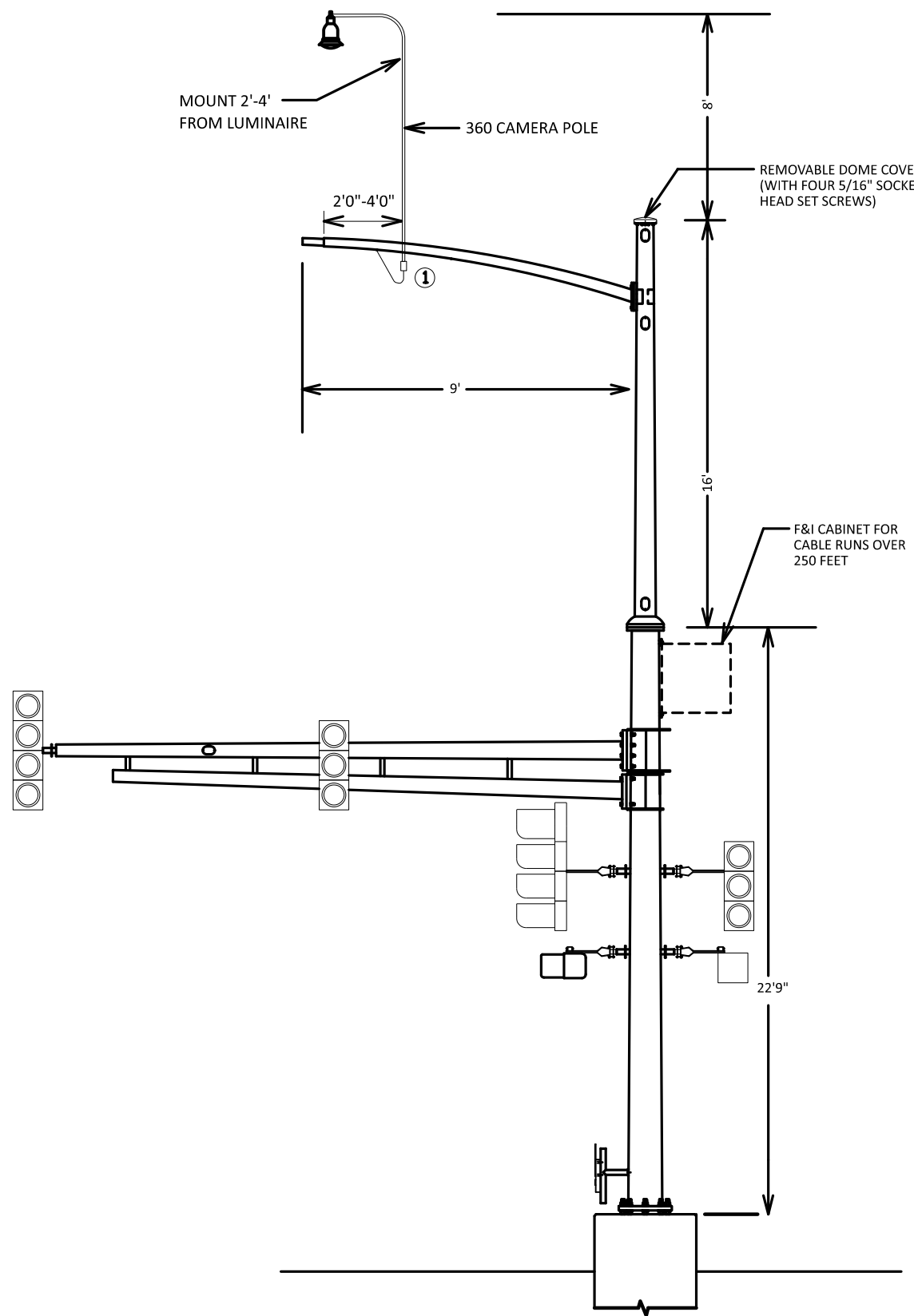


360 CAMERA WIRING AND MOUNTING DETAIL



NOTES:

- CAMERA DETECTION EQUIPMENT INCLUDING CAMERA, CAMERA MANUFACTURING JUNCTION BOX CAMERA POLE AND MOUNTING BRACKET AND HARDWARE ARE DEPARTMENT FURNISHED.
- DEPARTMENT FURNISHED CONTINUOUS WITHOUT SPLICE CABLE (CAT 5E) BETWEEN THE CAMERA AND THE TRAFFIC SIGNAL CONTROL CABINET. TERMINATE CABLE (CAT 5E) BETWEEN THE CAMERA AND THE TRAFFIC CONTROL SIGNAL CONTROL CABINET.
- INSTALL DEPARTMENT FURNISHED CAMERAS IN ACCORDANCE WITH THE MANUFACTURER'S INSTRUCTIONS. ADJUST AND LEVEL CAMERAS TO THE SATISFACTION OF THE SIGNAL DISTRICT TRAFFIC OFFICE.
- ① FURNISH AND INSTALL A CORD GRIP INTO THE LUMINAIRE ARM ATTACHMENT 3/4 INCH HALF COUPLING TO SECURE THE CAMERA CABLE.

PLOT NAME: TS Pole 360 Detail01312025
 PATH & FILENAME: OTST\Signals\Details\TS Pole Extension\TS Pole 360 Detail01312025.dgn
 PLOTTED/REVISED: 14-MAR-2025